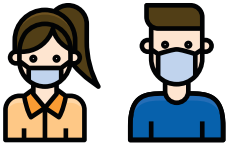


COVID-19 COURSE PROTOCOL



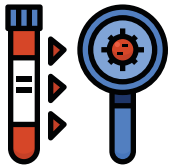
Students and instructors are required to wear face masks at all times during the courses. We recommend bringing your own surgical mask(s), but just in case, we will have back-up masks available during the courses.



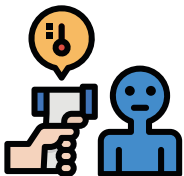
We have implemented several measures to mitigate the transmission of the coronavirus during our courses.



Prior to the course, you are required to sign a liability waiver. You must complete a daily online COVID questionnaire with all the usual questions (symptoms and possible exposure). You will have to pass the test to be allowed in the classroom.



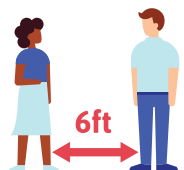
If possible, we recommend getting COVID testing within 72 hours of the course dates. For courses in Bethesda and Rockville, Maryland, we are exploring to have free testing available the day before the course, and hopefully, the results will be provided before the start of the course.



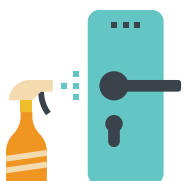
On each course day, we will check your temperature as an extra precaution. If you have a temperature of 100.3 F or higher, please do not come to the classroom.



Please wash your hands upon entering the classroom, and throughout the day. Of course, this is already common practice during the dry needling courses. We will provide gloves in all sizes.



We will maintain one partner for the duration of the course. For all courses, the class size has been reduced (or the course will be conducted in a much larger venue). We will maintain at least a 6ft distance between “couples.”



All surfaces will be disinfected throughout the course day. We will pay particular attention to proper ventilation. Where possible, we will feature specialized filters and air purifiers in the classrooms.

We have developed this protocol in conjunction with several specialists in the fields of medicine, epidemiology, air ventilation, etc. and we are confident that together we can create a safe course environment.